



**SINGAPORE
POLICE FORCE**
SAFEGUARDING EVERY DAY

SFA Sea-based Farm Workshop

Police Coast Guard

27 Oct 2023

Mission of PCG

To prevent, deter and detect crime in Singapore Territorial Waters

Police Coast Guard HQ & Regional Bases



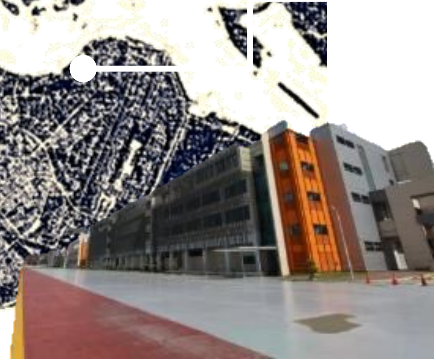
Lim Chu Kang Regional Base



Gul Regional Base



Loyang Regional Base



Brani Regional Base co-located with PCG Headquarters

Protecting Singapore Territorial Waters

➤ PCG deploys a multi-layered defence to safeguard Singapore's porous coastline by leveraging on the following strategies

Sea and Land patrol

Coastline Hardening

Partnership with local and international agencies



Protecting Singapore Territorial Waters

» Sea and Land Patrols

- PCG has a fleet of boats used to project police presence, detect suspicious activities, and respond to incidents
- Coastal Hardening Strike Force (CHSF) officers operate within challenging terrain as they conduct night patrol along Singapore's coastline



3 Series PC boat



5th Gen PT boat



PH boat



Coastal Hardening Strike Force

Protecting Singapore Territorial Waters

» Coastline Hardening

- Physical barriers are erected to deter and delay intruders
- Floating sea barriers installed to prevent intruding boats from coming close to the shores
- > 300 coastal surveillance cameras installed around the coastline to detect suspicious activities



CSCS located at ECP



FSB located at Sentosa



Fencing at Punggol Barat



Caging at Jurong Fishery Port

Protecting Singapore Territorial Waters

➤ Partnership with local agencies



ICA
Securing Our Borders,
Safeguarding Our Home



CNB
For a Drug-Free Singapore



**SINGAPORE
CUSTOMS**



M P A
SINGAPORE

sentosaTM
where discovery never ends



**Singapore
Food
Agency**

MARITIME RELATED CRIMES

Sea Robbery

- There have been sea robberies being reported in Singapore Territorial Waters, involving petty cash, hand phones & personal valuables

Illegal Sale of Marine Gas Oil

- Simple piping tools connected to tugboat's extra tanks
- Detected during hours of darkness

SUSPICIOUS ACTIVITY

- Dark boat / vessel approaching the shoreline
- Embarkation & Disembarkation of person(s)
- Loading & Unloading of cargoes
- Sighting of subject(s) walking along secluded shoreline



Matter to note at sea

Duty Unpaid Goods

- Avoid unnecessary interactions with the foreign craft within Singapore territorial Water especially illegal activities related (e.g., *duty unpaid goods*).
- **Buying, selling, conveying, delivering, storing, keeping, having in possession or dealing** with duty unpaid goods are serious offences under the Customs Act and GST Act.
- Offenders can be fined up to **40 times** the amount of duty GST evaded and/or **jailed for up to six years**. Vehicles used in the commission of such offences and proceeds of sales of duty unpaid goods are also liable to be forfeited.
- If you have information on smuggling activities or evasion of customs duty or GST can **call the Singapore Customs** hotline on 1800-233-0000 **or** **email** customs_intelligence@customs.gov.sg to report these illegal activities.



Dos and Don't(s)

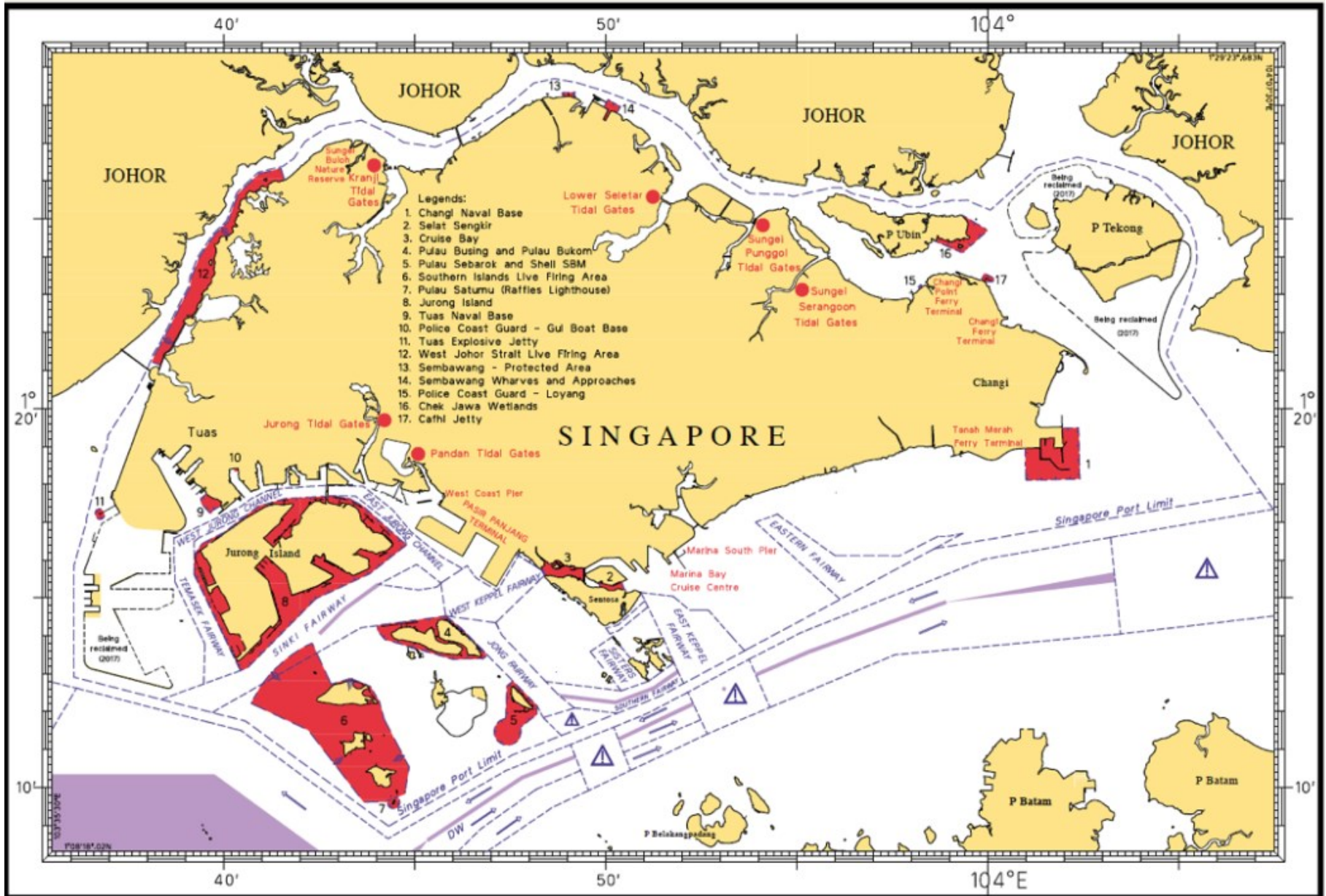
➤ Dos

- Ensure documents (manning licence) are ready and updated during Police checks
- Ensure AIS is working before casting off for work
- Ensure all crew and vessel are not carrying any duty unpaid goods (e.g., cigarettes and liquor) or incriminating items (e.g., drugs or offensive weapons) when operating in Singapore Territorial Waters.

➤ Don't(s)

- **DO NOT** send unauthorised personnel in/out of Singapore Territorial Waters without proper immigration clearance
- **DO NOT** bring in/out duty unpaid goods or buy/sell duty unpaid goods with other vessel within Singapore Territorial waters.
- **DO NOT** enter into Restricted and Prohibited areas.

Restricted and Prohibited Areas



Why is my vessel checked by the Police Coast Guard?

- Prevent, deter and detect crime and potential security incidents.
- Ensure that Singapore Territorial Waters remains crime free, and to deter would-be-criminals from committing criminal offences and terrorist acts.
- Ensures the safety and security of seafarers and the business activities at sea

S'pore ranked safest to travel among 50 countries by US research start-up

Nice

Mandy How | December 07, 2022, 02:40 PM



Singapore is safest country to do business: new Pinkerton index



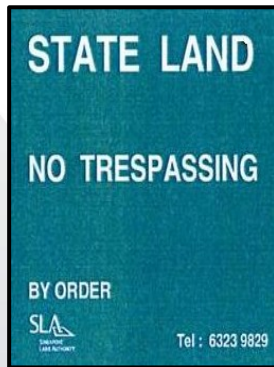
TRESPASSING AT COASTAL AREAS

- Certain areas along the shoreline are state land under Singapore Land Authority (SLA) or private land under Jurong Town Corporation (JTC)
- These areas are dark, uninhabited and are prone to landing of illegal immigrants and contraband smugglers
- Currently, anglers engaged in fishing activities along the coastal state land or private land are creating “noise” to PCG’s coastal surveillance
- SPF is adopting a stringent enforcement stance against unauthorized persons entering coastal state land or private land

NO TRESPASSING SIGNAGES



**SPF
No Trespassing
Signage**



**SLA
No Trespassing
Signage**



**JTC
No Trespassing
Signage**



P . C . G

Our sea community can play a vital part in maritime security. You can help us to make our waters and shoreline safe by doing the following:

P *roactive Observation*
(Look out for any suspicious craft or person & observe their activities)

C *all Police for Assistance*
(999)

G *ive us all relevant information*
(Date, Time, Location, Craft Description, Number of Persons & Activities)



What Can You Do To Help? Report to the Local Authorities

➤ Information that can help the authorities:

- Date and time of happening
- Description of the perpetrator's vessel
- Last seen heading to which location / direction
- Number of perpetrators
- Description of perpetrators
- Provide GA for sharing for vessel familiarisation to aid intervention forces

• Type of vessel
Sampan, speedboat



• Description
Canopy, On board motor, type of steer

• Perpetrator's detail
Number, gender

• Location
Heading to shore, drifting along STW, alongside vessel

• Build and Height
Small, thin, plump



• Type of clothing
Mask, Singlet, Bermudas

• Complexion
Fair, tanned, dark

• Items carried
Firearms, weapons, bag

• Nationality / Ethnicity
Chinese, Indian, Malay, Caucasian

What Can You Do To Help? Seafarers

➤ **Run** away from danger! Do not surrender or attempt to negotiate

➤ **Hide!** Find cover and stay out of sight

➤ **Tell!** Sound the alarm for others to know and alert the authorities



RUN.



HIDE.

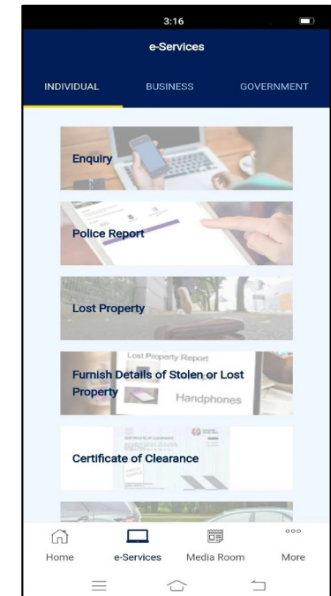
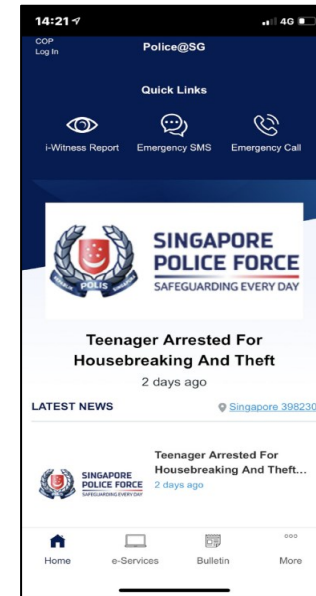


TELL.

POLICE@SG – Share mobile application

➤ Initiative from Singapore Police Force which provides useful information to members of public

- Latest crime news, police appeals for information and missing persons
- Locate the nearest Police station
- Share content on social media
- Links to Singapore Police Force homepage and social media sites
- Submit information or respond to Police appeals via 'i-witness'



Who Can You Contact During Emergency?

Organisation	Contact / Channel	Usage
Police Hotline	999	Requesting for Police assistance from the PCG
SCDF Hotline	995	Request for marine fire emergency from the Singapore Civil Defence Force
Marine Safety Control Centre	VHF Channel 7	Co-ordinating marine emergency operations led by MPA